

Contents

- Table of Contents** **1**

- 1 Introduction** **2**

- 2 Setup** **3**
 - 2.1 Configuration 3
 - 2.2 sqlite 3
 - 2.3 mysql 4
 - 2.4 vehicles 4
 - 2.5 Setup Complete 4

- 3 Choosing a vehicle** **5**

- 4 Entering Fuel Mileage Data** **6**

- 5 Display and Edit fuel mileage data** **8**

- 6 Statistics** **9**
 - 6.1 Lifetime 9
 - 6.2 Yearly 10
 - 6.3 Monthly 10

- 7 Exporting Data** **12**

Chapter 1

Introduction

Fuel Manager is an application that keeps track of four things, miles, gallons, cost, and the date of each fill-up. It generates monthly and yearly summaries of miles driven, cost of fuel, how many gallons, and fuel mileage.

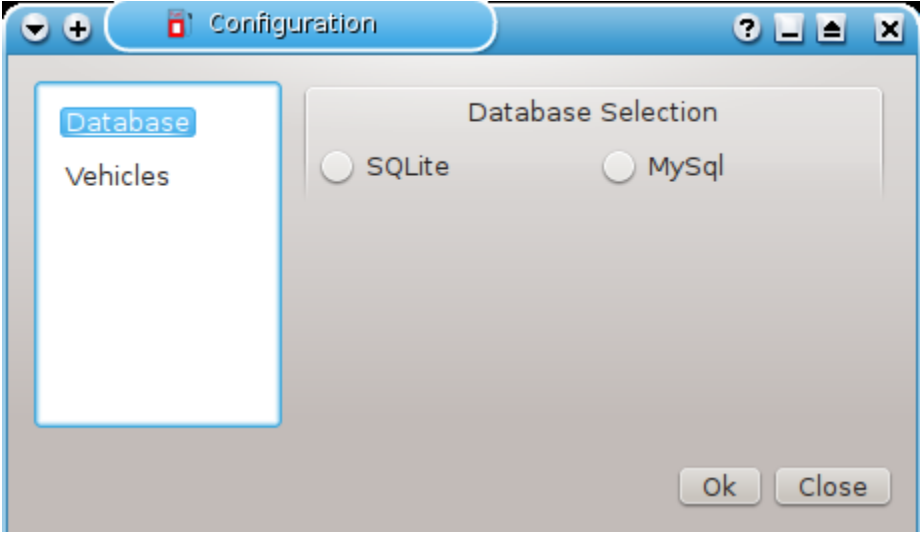
Chapter 2

Setup

When you launch fuelmanager for the first time, you need to select the type of database you want to use and then add a vehicle. There are two databases supported, sqlite and mysql.

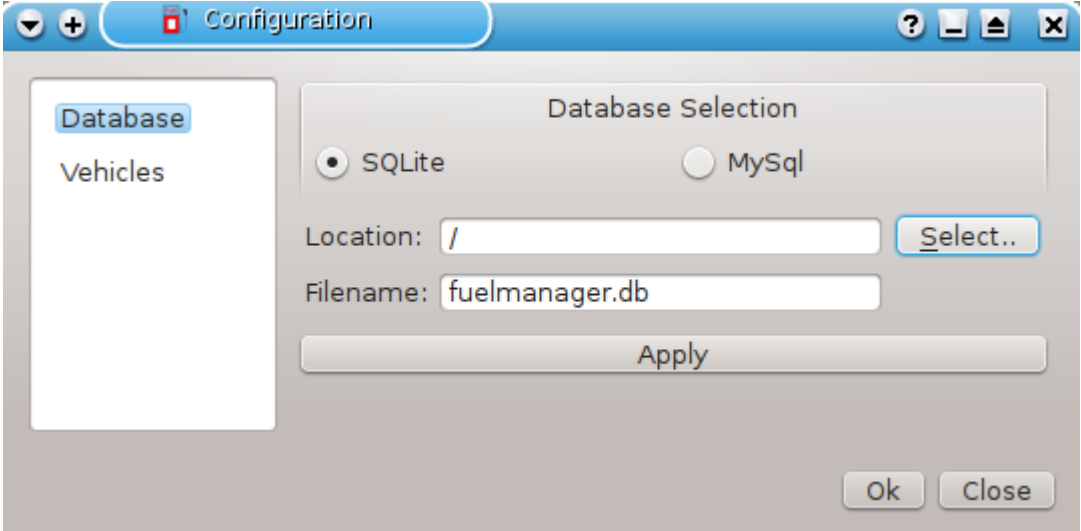
2.1 Configuration

the configuration dialog looks like this:



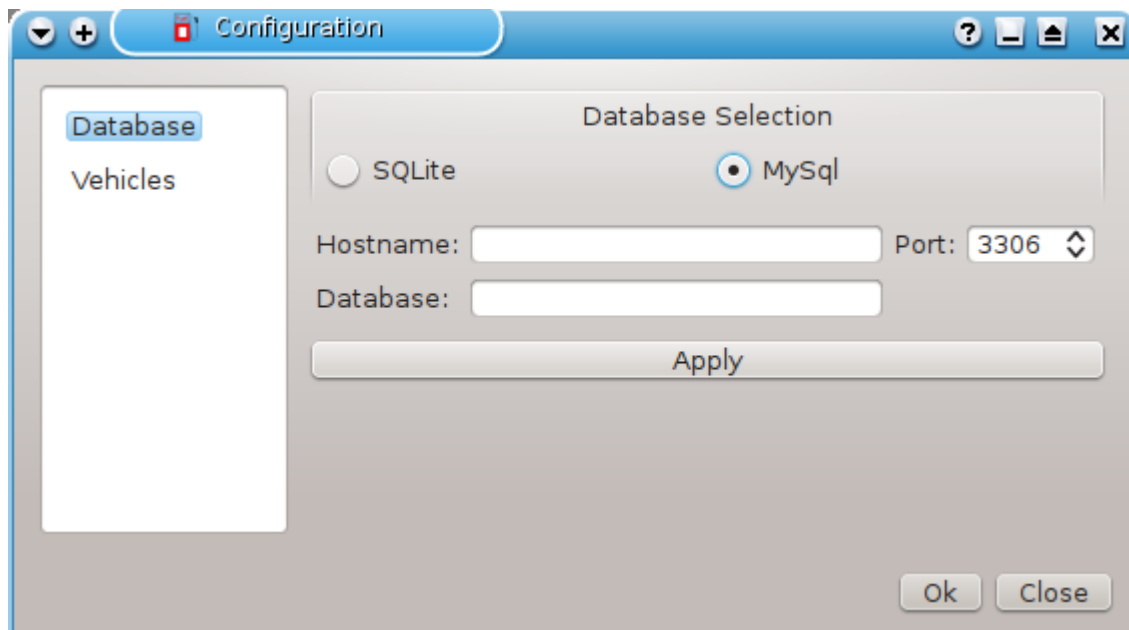
2.2 sqlite

If you choose sqlite, you need to select the path of where the file will be located. Then click apply to save the changes.



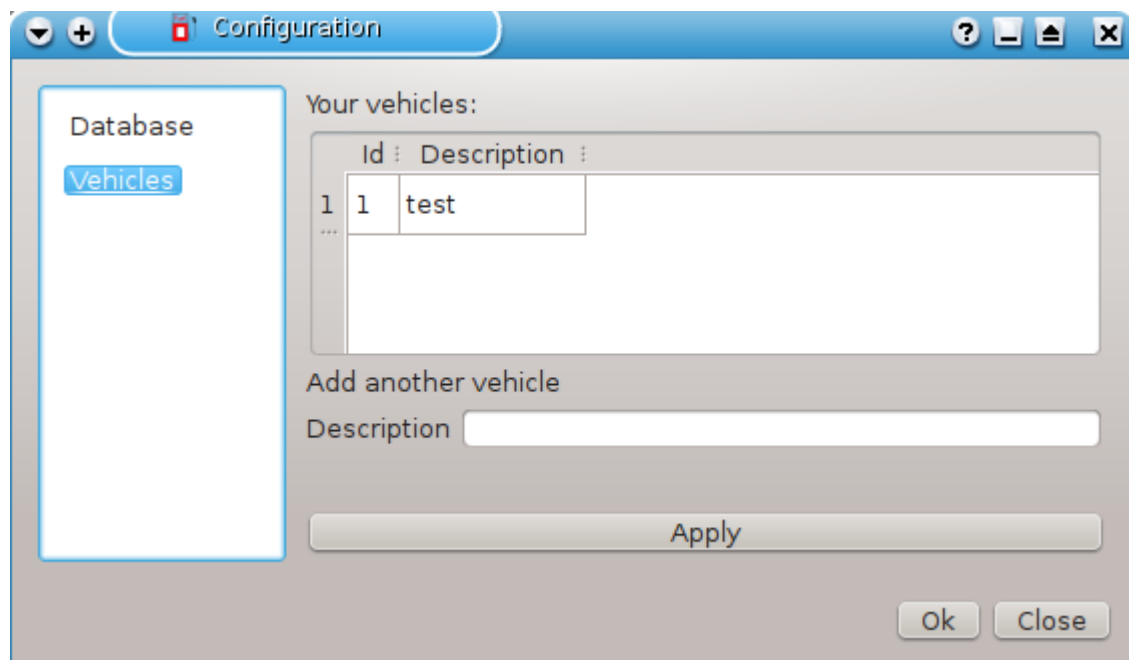
2.3 mysql

If you choose mysql, you need to type in the hostname, port number, and the database name. Click apply to save the changes.



2.4 vehicles

Click on the vehicles option on the left. Type in the description in the description field and click apply to save the changes.



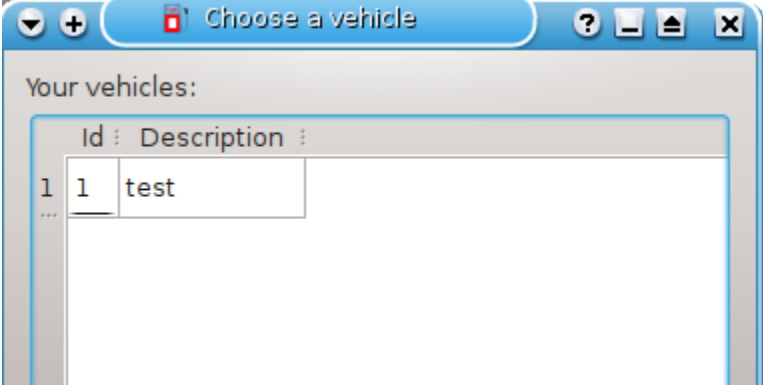
2.5 Setup Complete

Setup is now complete, click ok to close the box.

Chapter 3

Choosing a vehicle

Before you can do anything, select a vehicle first. To do that, click on File -> Select Vehicle. The following screenshot should be displayed:

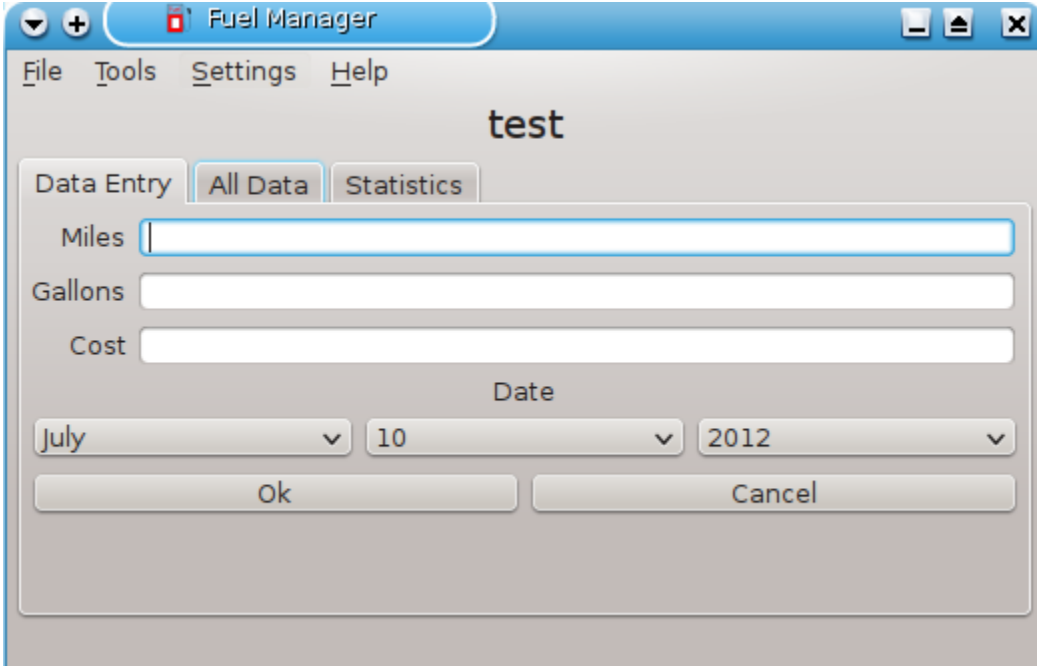


Click on the vehicle you want.

Chapter 4

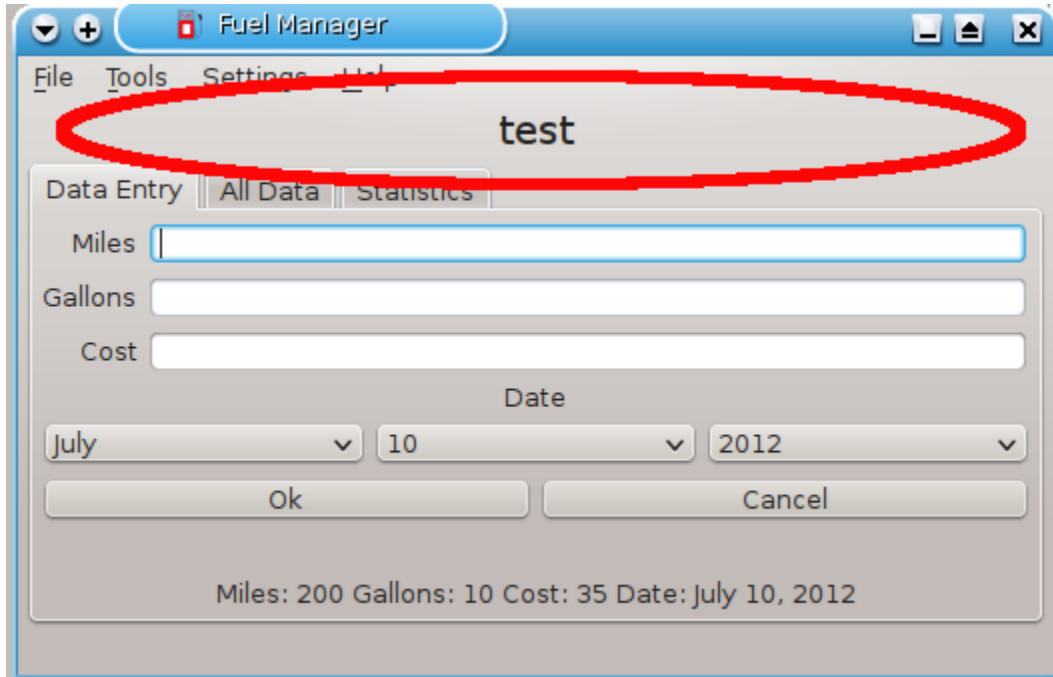
Entering Fuel Mileage Data

This is what the data entry screen looks like:



To enter data, type in the miles, gallons, cost in the correct boxes. Then select the month, date, and year of the fill-up from the drop-down boxes. Click ok to save your changes.

The currently selected vehicle is here:



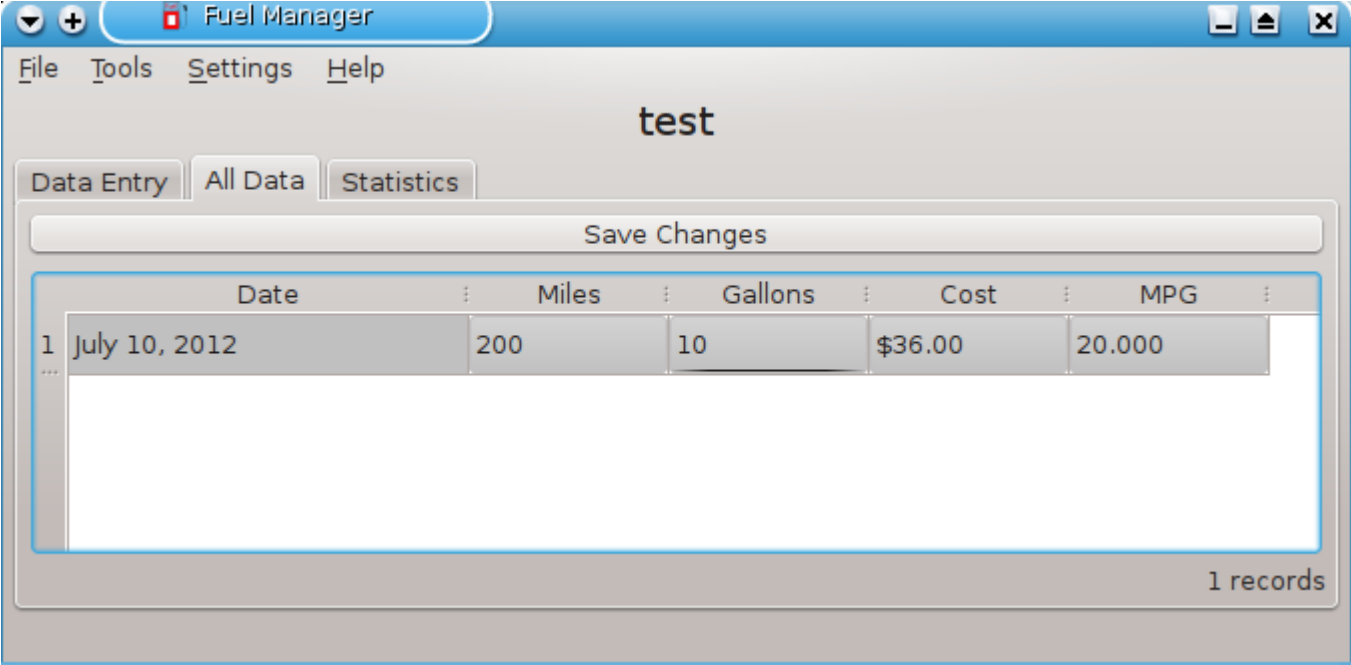
The last saved data will be located at the bottom:

The screenshot shows a window titled "Fuel Manager" with a menu bar containing "File", "Tools", "Settings", and "Help". The window title bar also includes standard OS window controls. The main content area has a title "test" and three tabs: "Data Entry" (selected), "All Data", and "Statistics". Below the tabs are input fields for "Miles", "Gallons", and "Cost". A "Date" section contains three dropdown menus for month ("July"), day ("10"), and year ("2012"). At the bottom of the form are "Ok" and "Cancel" buttons. A red oval highlights the summary text at the bottom of the window: "Miles: 200 Gallons: 10 Cost: 35 Date: July 10, 2012".

Chapter 5

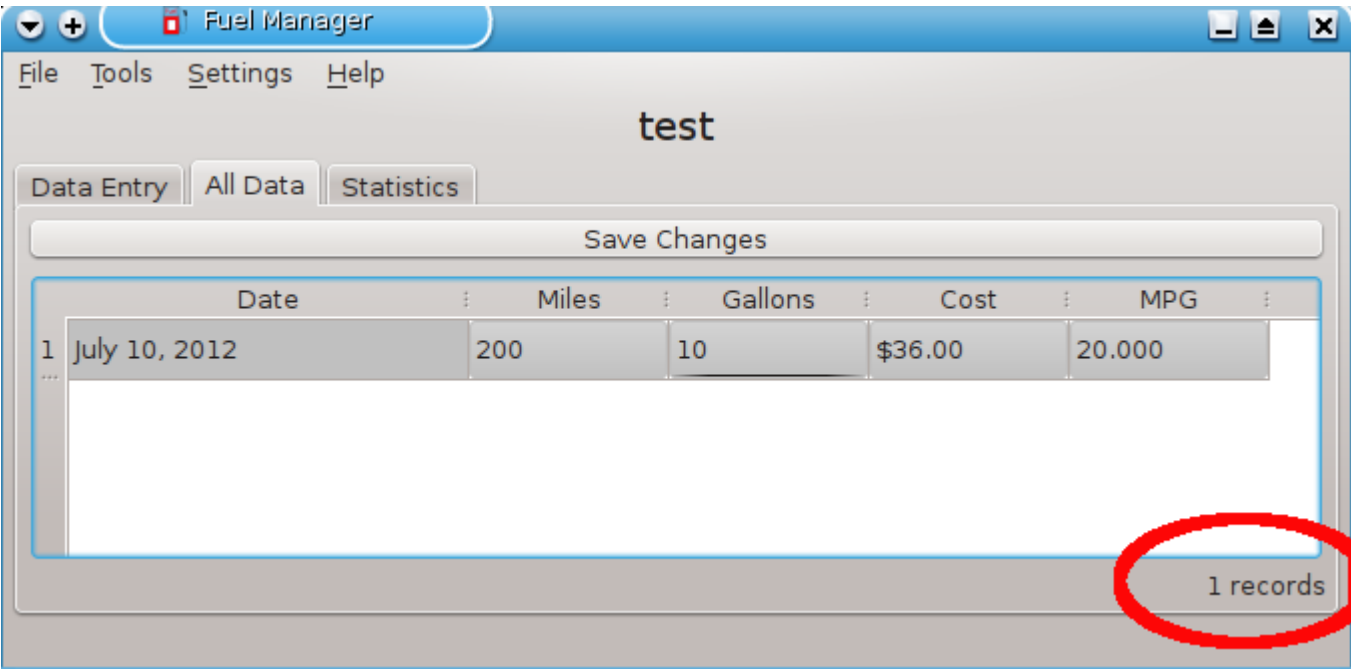
Display and Edit fuel mileage data

Here is the All Data screen



This is all the fuel mileage information for the currently selected vehicle. You can go here to edit the date, miles, gallons, and cost. The MPG will be automatically recalculated. Click on “Save Changes” to save your changes back to the database.

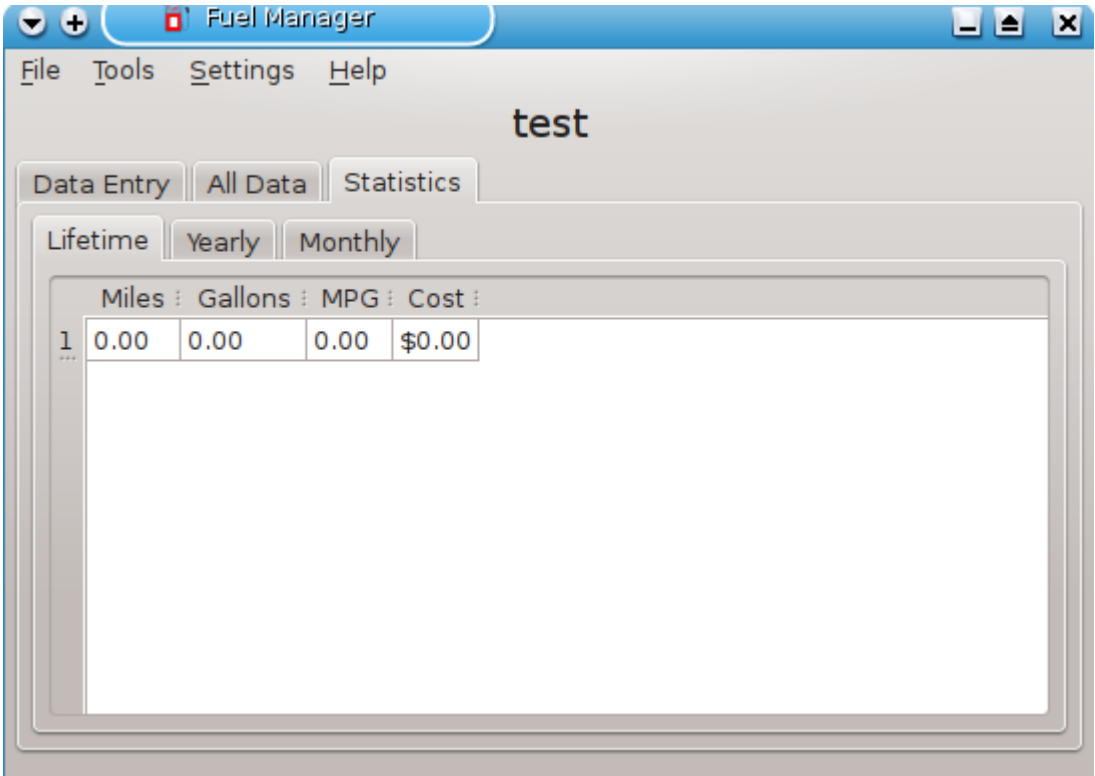
The total number of records is displayed at the bottom



Chapter 6

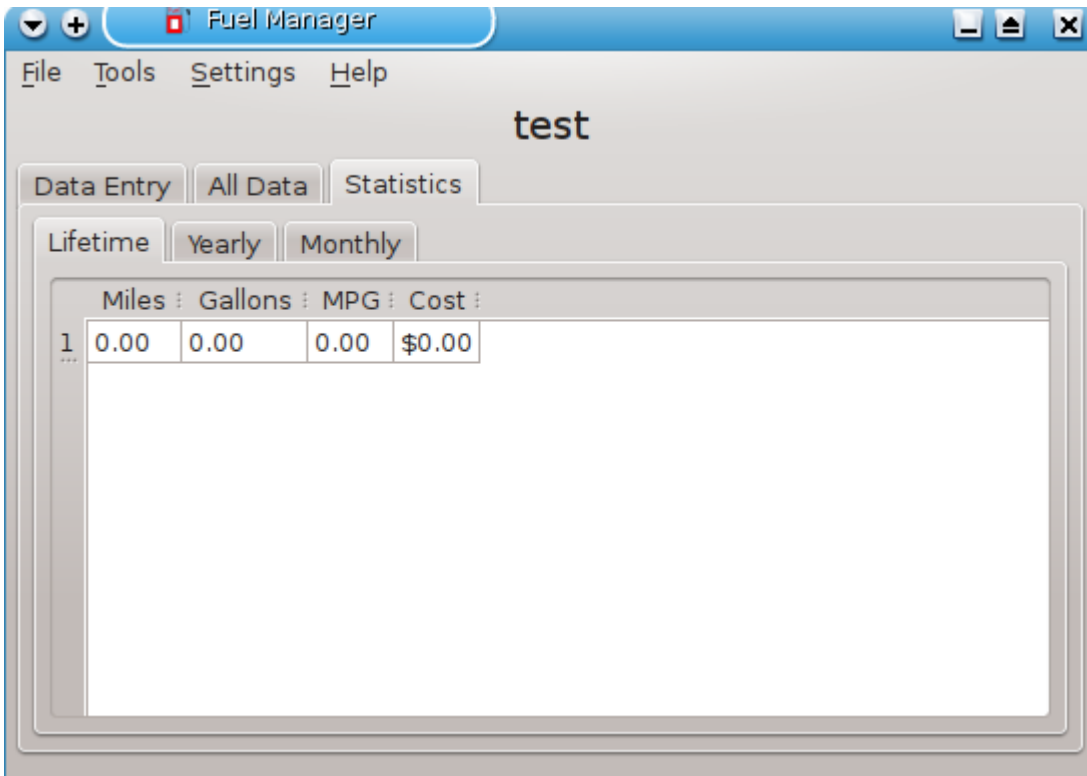
Statistics

The “Statistics” tab contains three different types of stats, Lifetime, Yearly, and Monthly. A description of each is below.



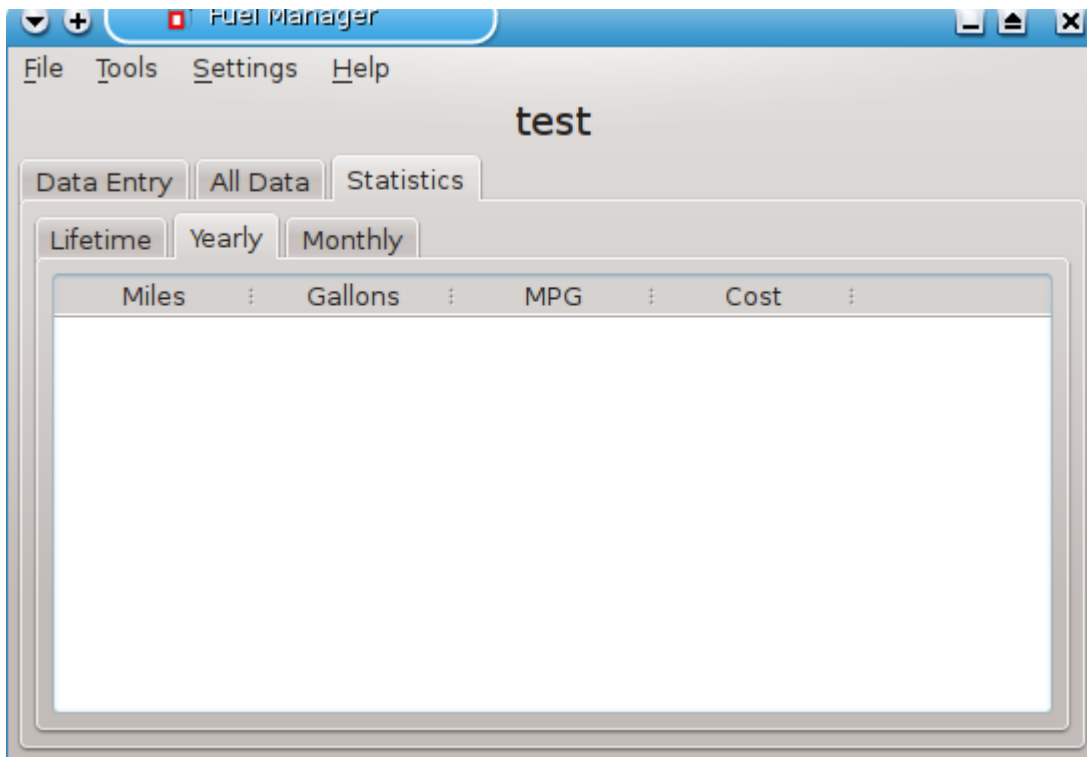
6.1 Lifetime

Shows the sum of all the miles, gallons, cost, and MPG for the selected vehicle.



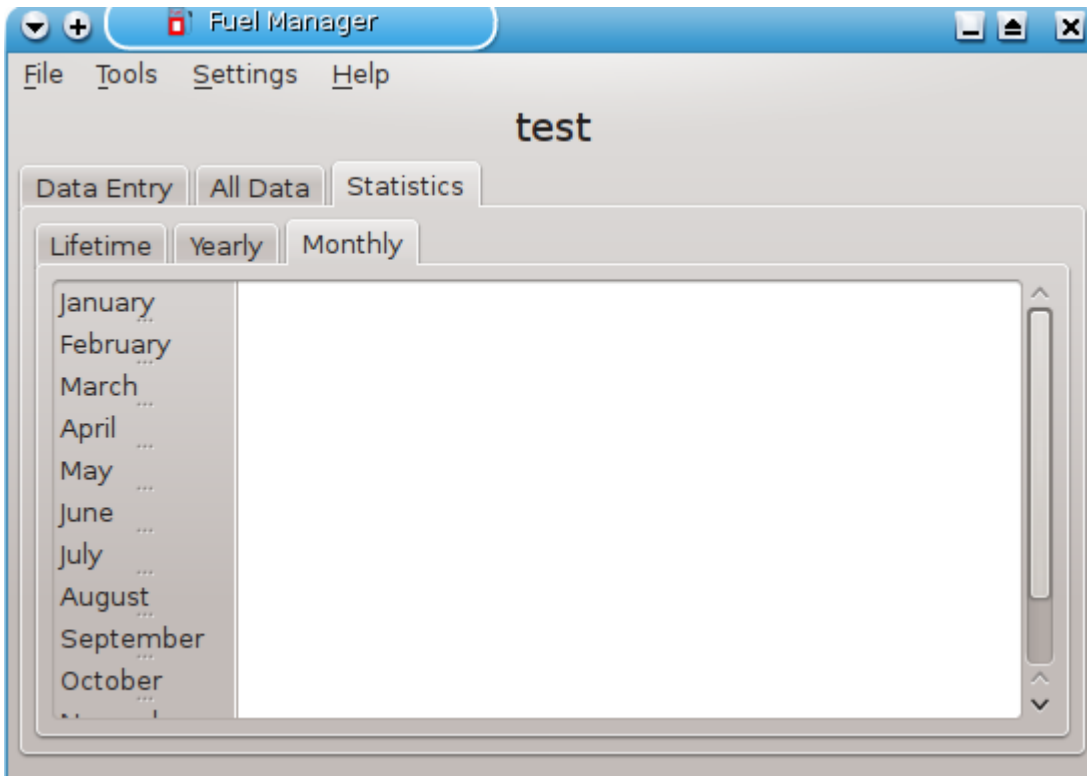
6.2 Yearly

Sum of all the miles, gallons, cost, and MPG broken down by the year



6.3 Monthly

Sum of all the miles, gallons, cost, and MPG broken down by the month and year



Chapter 7

Exporting Data

You can export the fuel mileage data for the selected vehicle by clicking on Tools -> Export Data. This will export the miles,gallons,cost, and fillup date into a comma separated value file. The MPG is calculated and not saved into the database. Select the location where you want to save the file, then type in a filename and click ok.